

VOLTECH O AND M SERVICES PVT. LTD.

We deliver your needs....



Received the
Best O&M
Service Provider Award 2017 - 18
from Mission Energy Foundation



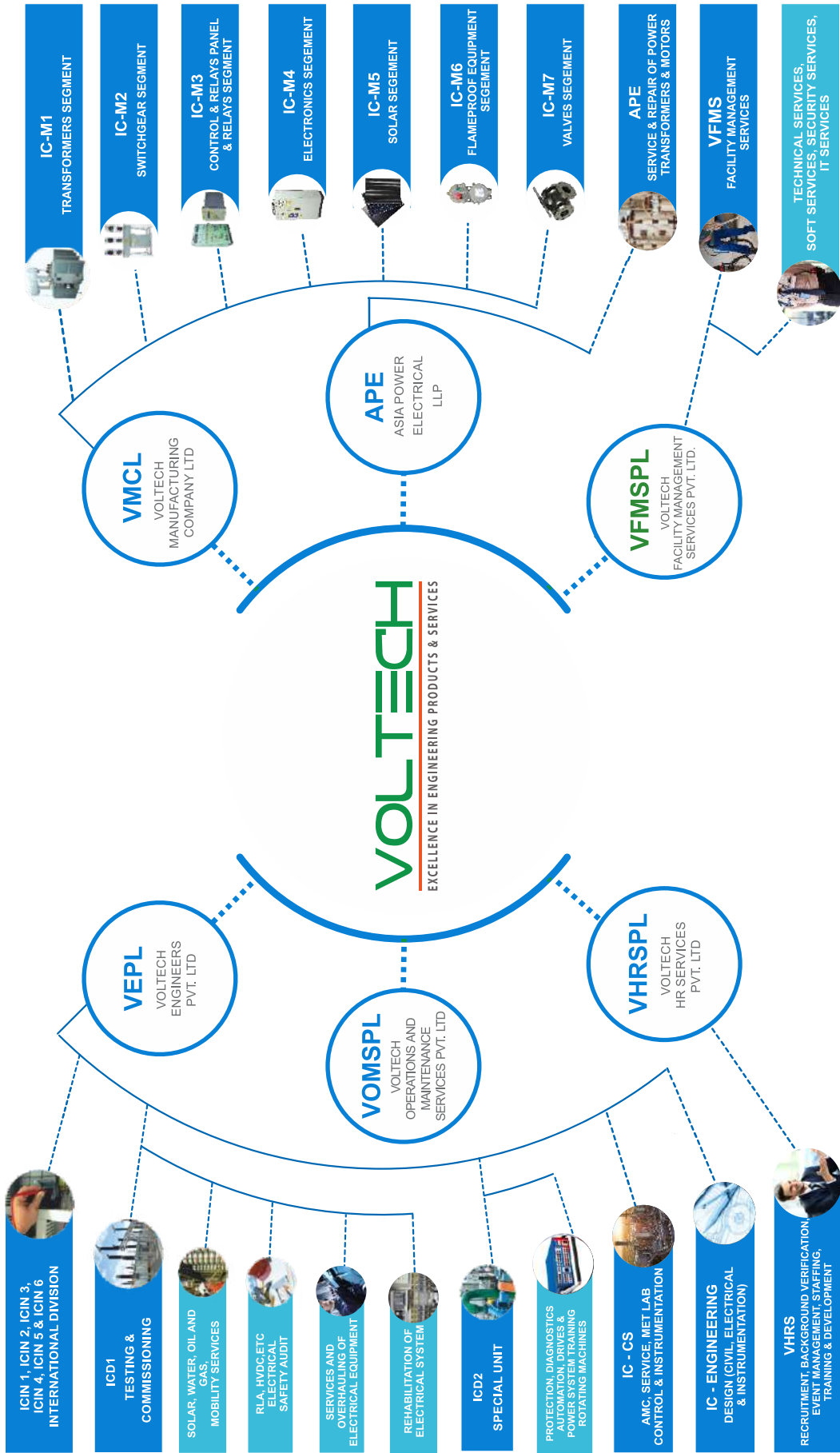


Table of Contents

Group Organization Chart	-----	04
Key Personnel	-----	05
Chairman's Message	-----	06
Area of Services	-----	11
HSE Statistics	-----	12
HSE Management	-----	13
O & M Experience	-----	16
Credentials	-----	37
Clientele	-----	42
Global Expansion	-----	43

ORGANISATION FLOW CHART

VOLTECH GROUP OF COMPANIES



Vision & Mission

Vision

To be a Global leader in Asset Management Solutions

Mission

We provide High Quality, Safe, Cost effective, Reliable Asset Management Solutions and Technical supports as per customer needs and satisfaction using world class best practices

About VOMS

Voltech offers professional services in the Operation and Maintenance of a wide range of Power Plants, Substations, Switchyard of Industrial Sectors and Oil & Gas. These include Power Generation (Thermal, Nuclear, Combined Cycle, Diesel, Hydro, Cogeneration and Other Renewable Energy), Oil & Gas Refineries, Water Treatment and Industrial Facilities.

Voltech can provide Total Operation and Maintenance services ranging from project development support through mobilization services to O & M contracts from Pre-commissioning, commissioning and start-up of commercial operation, supporting the whole project life cycle. The dynamic contribution of over 2000 employees is our immense potential.

Key Personnel



Mr.M.Umapathi
Chairman & Director
umapathi.m@voltechgroup.com



Mr.S.Manikandan
Director
Mob: +91 9600095611
manikandan.s@voltechgroup.com



Mr. R. Swaminathan
Chief Advisor - Board
Mob: +91 9790808013
swaminathan.r@voltechgroup.com



Chairman's Message



Dear and Esteemed customer,

I extend you my warmest greetings on behalf of the Voltech Group.

Imagine a situation where you are consistently maximizing the profitability of your industrial and commercial assets while being able to flexibly adapt your operations over time with changes in the desired outcomes. Think how it would benefit you if you were able to apply the most advanced technology combined with long term financial predictability? Voltech's O&M solutions aims to address exactly those needs, by providing the hassle-free transactions that can relieve the owners of the stress and strain of day-to-day

administration, while combining cutting-edge predictive analytics and highly capable manpower deployment. This would allow you to focus on your core competencies while Voltech manages your operations. Voltech Operation and Maintenance Services (VOMS), a subsidiary of the Voltech Group, is a company dedicated to planning and managing the operation and maintenance of various industrial and commercial assets to ensure that safe operational performance is optimized and availability is maximized while minimizing the impact of costs. As an integrated asset management service provider, our core proficiency remains our extensive experience and specialization in the areas of power infrastructure. Our areas of experience and service also extend to refineries and

petrochemicals, sugar industry, oil & gas, steel plants, utilities, off-sites as well as renewable energy power plants.

While reducing the costs at the customer's end, VOMS delivers safe solutions and reliable expertise so that our client's manpower, projects and processes run efficiently. We understand our clients' need for reliable, relentless service that's keeps accountability high and revenue on an upswing. Our experience in the field for over two decades has given us the high level of industrial wisdom and personnel expertise that would allow us to attend to your needs around the clock. VOMS as a business partner has the capabilities to bring these qualities to you.

I also assure you that VOMS is a top-safety performer, certified by ISO 9001:2015, ISO 14001:2015 & ISO 45001:2018, and prides itself in exercising the highest safety, environmental and quality standards. A winner of the prestigious "Best O&M Service Provider" award by the Mission Energy foundation in 2018, our credentials and accolades speak for itself in a crowded market where quality and differentiation are the crucial drivers for organizational excellence.

Our organization has been created by the building blocks of hard work, persistence and an obsession for quality. We have never shirked from challenges, and have continuously outdone our efforts at being the best in the field. Voltech's rapid growth trajectory of the past decade and its exemplary reports of sales and profit would stand our claims in good stead.

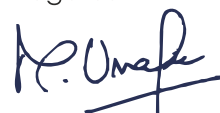
The Voltech brand has become an established presence within the power sector; not only in India, but across the world, with many significant achievements in the Middle-East, South-East Asia, Africa and the SAARC region.

Our expanded footprint into Europe, particularly the United Kingdom and our newly established offices in the American continents continue to open up new vistas for us to explore in the coming years. We ask you to undertake this journey with us.

This company brochure is specifically designed to provide you with the most up-to-date information about our organization in terms of our experience, capabilities and technicalities in a comprehensive way. Our offices work around the clock to attend to your calls and queries about any service that we endeavour to offer. Please peruse through this brochure as a ready reference, and contact us at your own pleasure. It is our spirited endeavour to associate with you, and we are pleased to invite you to experience the best of our product and service offerings.

You imagine it- We will deliver it!

Regards



M. Umaphi
(Chairman)

Integrated Asset Management Services

Why we are in this field

- Growing demand in the market for outsourcing the O & M activities as the Client can focus more on the core business improvements rather than focusing on day to day Operation & Maintenance of the plant.
- Industries are thrusting more responsibilities on the service providers to avail maximum benefits in terms of quality and quantity.
- Industries are looking for service providers who can take up complete ownership of the equipment / assets of their plant.
- Client can get rid of Total Manpower / HR / IR issues and concentrate on their core business.

VOMS Five Values

- Safety- Anywhere and Everywhere.
- People-We as a Valued Team grow in our capabilities. We are proud to say Voltech O and M – a great place to belong.
- Integrity-We maintain our personal and professional integrity at all times.
- Functional Excellence-We drive continuous improvements in work processes, organizational capabilities etc.
- General Interest-We work cross functionally among other divisions to achieve Voltech Group vision.



Benefits that can be offered by VOMSPL

Experienced in providing safe, high quality, cost effective, reliable O & M services and technical supports as per customer needs and satisfaction using World class best practices by way of

- Strong Safety record - on Health, Safety & Environment.
- Reducing Cost/Cost savings/Improve the Gross Margins.
- Continuous Improvement on quality.
- Optimizing the Inventory.
- Skilled and competent Manpower support- Electrical, Mechanical, Control & Instrumentation, Planning and Support services.
- Strong Technical skills to support and carry out Erection, Commissioning, Operation, Maintenance and Shutdown activities in Power, Substation, Oil & gas and Petrochemical industries.
- Maintain all Guarantee parameters / KPIs-Key Performance Indicators.
- Carry out scheduled Maintenance at specified intervals based on performance and OEM recommendations.
- Strong Training capabilities.
- Preventive Maintenance, Productive Maintenance, Total Productive Maintenance & Breakdown Maintenance.



Voltech O and M Capabilities

- Strong Technical skills to carry out Erection, Testing, Commissioning, Operation, Maintenance, Project Management, Shutdown activities in Power industries, Oil & gas and Petrochemical Industries.
- Skilled Manpower support for O&M and Consultancy services
- We are also offering Technical Consultancy support services for RCM, CMMS, Equipment strategy implementation, stores verification, Materials coding & cataloging with experienced employees and some of the description as below,

RCM - Reliability Centered Maintenance

RCM is a "process used to determine what must be done to ensure that any Physical asset continues to fulfill its intended functions in its present context"

It is a highly structured frame work that allows users to determine the most appropriate strategy for difference assets.

Total Productive Maintenance

Total Productive Maintenance (TPM) is a process that enrolls the entire organization in asset management responsibility. This is achieved by utilizing problem-solving teams called Equipment Improvement Teams, engaging the operator in "basic care "of the equipment through Autonomous Maintenance, focusing improvement efforts toward Maintenance Excellence, enhancing skills and knowledge, and improving how equipment is designed and manufactured.

TPM represents a shift in the way we think about maintenance. This process is based on a philosophy of maintenance that is difference from traditional maintenance.

TPM has evolved through a series of steps.....

- Total Planning activities-Retrieving PM activities from CMMS, Reviewing, Planning, Scheduling, Execution and Close out of the tasks/activities in SAP and meeting the KPIs through planning Tools.
- Technical Training for Engineers and Technicians.

Area of Services

Power Industry



Substation

Refinery and Petro Chemicals



Process Industry

Oil & Gas Industry



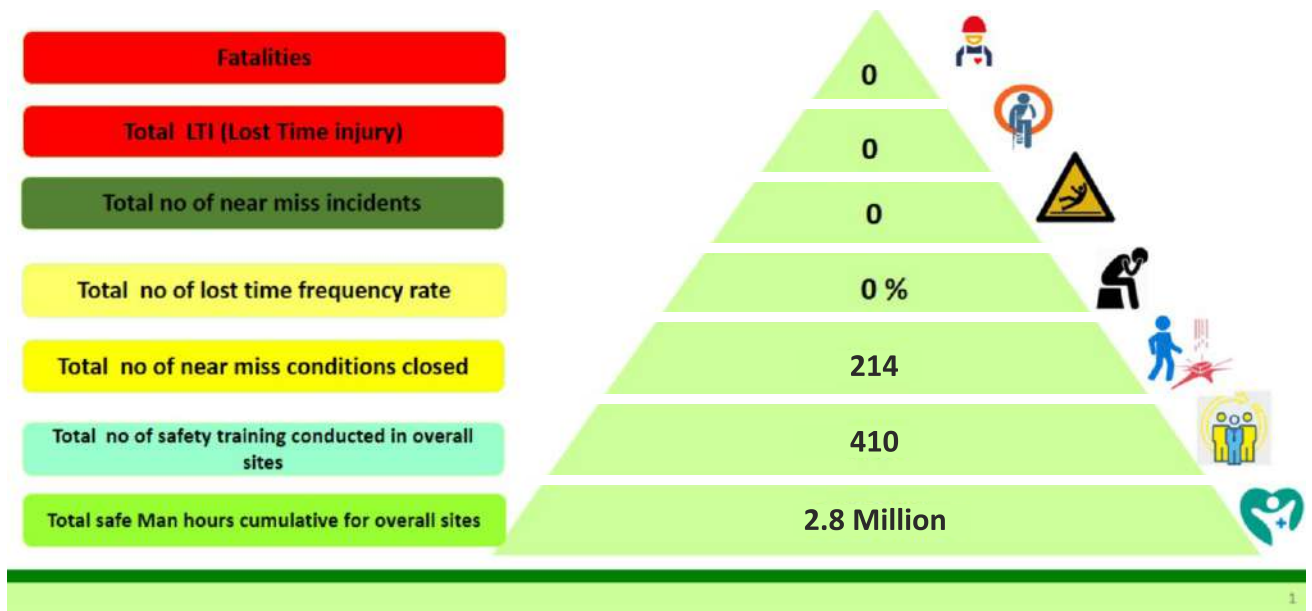
Steel Industry

**Railways / Seaport
Airport**



**Renewable Energy
Power Plant**

2021 - 2022 HSE Statistics



SAFETY IS OUR FIRST PRIORITY

- 4 Star Rated contractor safety management award from TATA STEEL LIMITED- Kalinganagar.
- Best Safety Performing Agency From KSK- Akaltara
- Best 5S for O & M category FY-2018 from Vedanta Group @BALCO – Vendus meet.
- Best safety Icon of the month award from vedanta Limited.
- Kaizen gold award from BALCO
- Best innovation Kaizen Award from Vedanta Limited - Jharsuguda



HSE Management

To provide the highest Quality as well as Professional Occupational Health & Safety Services to our Employees. To establish and meet the client's needs in terms of Occupational Health & Safety Management. To assist our clients in providing employees a healthy and safe working environment, free of hazards.

We believe that accidents don't have to happen and that they can be prevented. Thus we aim to assist industries in the prevention of accidents and injuries through Auditing and Training. Our highly experienced and well-trained staff and Safety Officers have the practical and theoretical expertise to assist our workmen in the prevention of losses caused by accidents.



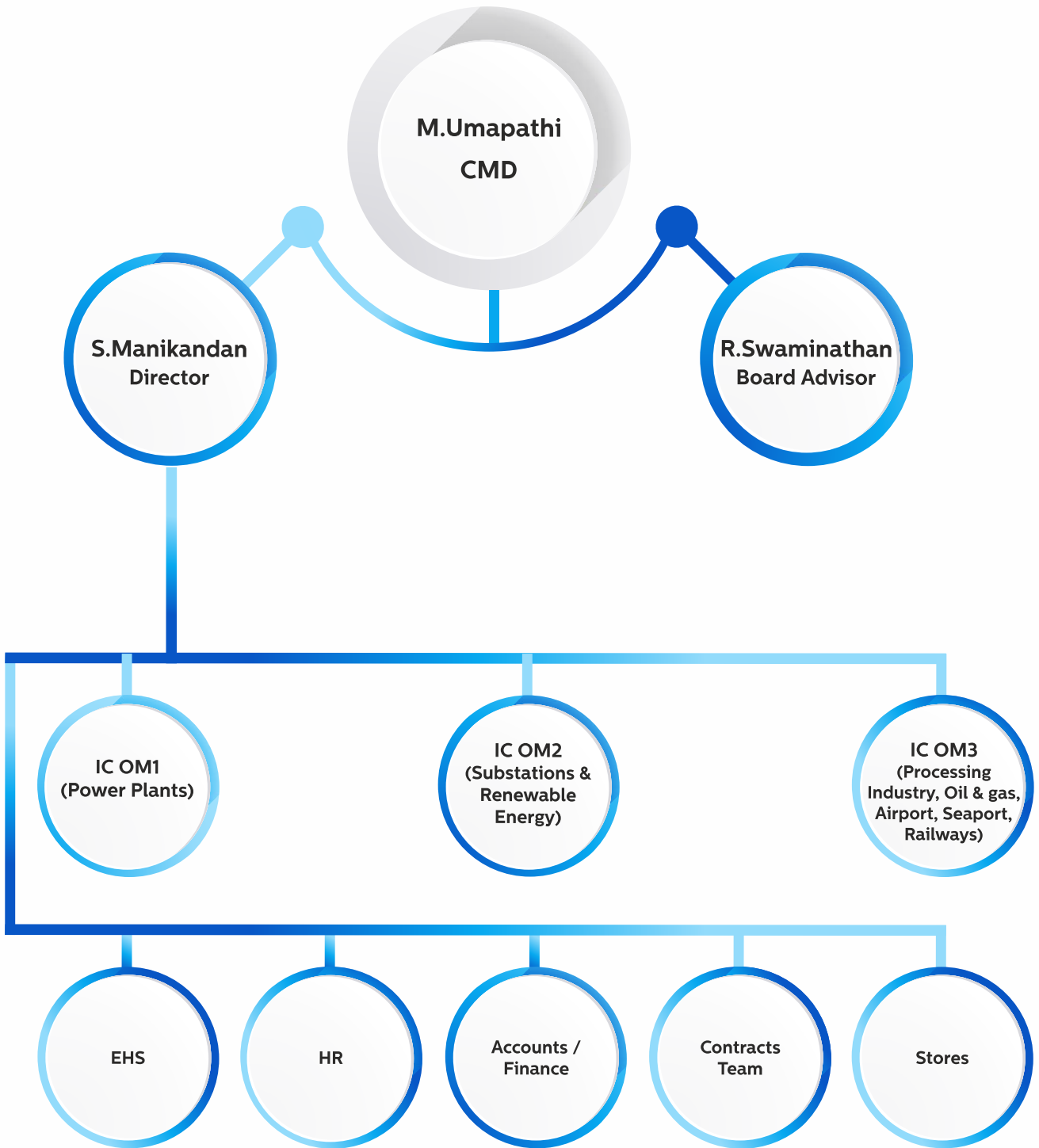
- Leadership Accountability
- Comply With EHS Laws
- Risk Assessment And Hazard Control
- Incident Reporting And Investigation
- Risk Control Program
- Work Place Safety Awareness
- Contractor Safety Program
- Strengthen Existing H&S Program



Services Offered for Power, Oil & Gas, Petro Chemical, Steel & Sugar Industries

- Day to day Operation and Maintenance of the plant & Utilities.
- Complete plant staffing.
- Planned and unplanned Maintenance services.
- Maintenance which includes-Preventive, Predictive, Pro active (RCM,TPM).
- Startup / Shutdown Support.
- Inventory management.
- Local and remote monitoring and diagnostics.
- Comprehensive training.
- Health, Safety & Environment programs.
- Site-specific documentation and procedure, Method statement development.
- Site-specific CMMS -Computerized Maintenance Management programs.
- Equipment service and repair.
- Utilization of local and remote monitoring and diagnostics.
- Spare parts, Consumables and tools.
- Switchgear Maintenance and Management.
- Retrofitting and refurbishment of Distribution and Power Transformers.
- Power delivery.
- Fuel Management.

Organisation Chart



O & M Experience - Ongoing Jobs

Power Plant

NTPC LIMITED – Lara Super Thermal Power Station

Capacity of Plant : 2X800 MW Thermal Power Plant
Scope of Work : Long Term Maintenance Contract for EMD and C&I
Location : Lara, Chhattisgarh

NTPC LIMITED – Darlipalli Super Thermal Power Station

Capacity of Plant : 2X800 MW Thermal Power Plant
Scope of Work : Long Term O & M Contract for Electrical C&I Systems
Location : Darlipali, Odisha

NTPC LIMITED – Sipat Super Thermal Power Station

Capacity of Plant : Stage - I: 3x 660 MW, Stage -II: 2x 500 MW Thermal Power Station
Scope of Work : PM, PDM, Shift Maintenance and Overhauling Contract of EMD CHP Area
Location : Sipat, Chhattisgarh

NTPC LIMITED – Kahalgaon Super Thermal Power Project

Capacity of Plant : Stage - I: 4 X 210 MW, 3 X 500 MW Thermal Power Station
Scope of Work : 1. ARC of STAGE-1 & 2 C&I off Site Including Ash bagging and Ash Brick Plant
2. Biennial Contract for Switchyard, Transformers and Batteries
Location : Kahalgaon, Bihar

NTPC LIMITED – Singrauli Super Thermal Power Station

Capacity of Plant : 2X500MW Thermal Power Plant
Scope of Work : Overhauling, Breakdown and Preventive Maintenance of TG Equipment
Location : Singrauli, Madhya Pradesh

NTPC LIMITED – Talcher Super Thermal Power Station

Capacity of Plant : 6 × 500 MW Thermal Power Plant
Scope of Work : 1. BRC for Maintenance and Overhauling Of HT Motors
2. Maintenance Contract for C and I System
Location : Kaniha, Odisha



O & M Experience - Ongoing Jobs

Power Plant

NTPC LIMITED - Bongaigaon Thermal Power Project

Capacity of Plant : 240 MW Thermal Power Plant
Scope of Work : Biennial Maintenance Contract for Equipments in Turbine & Auxiliaries Area
Location : Bongaigaon, Assam

NTPC LIMITED - North Karanpura Super Thermal Power Project

Capacity of Plant : 3X660MW Thermal Power Station
Scope of Work : Long Term Mega O&M Contract For Electrical and C&I Systems
Location : North Karanpura, Jharkhand

UTILITY POWERTECH LIMITED- NTECL-Vallur Thermal Power Plant

Capacity of Plant : 3 x 500 MW Thermal Power Plant
Scope of Work : Providing round the clock operation assistance in main plant & offsite equipment
Location : Ponneri, Vallur, Chennai

ARAVALI POWER COMPANY PVT LTD – Indira Gandhi Super Thermal Power Plant

Capacity of Plant : 3 x 500 MW Thermal Power Plant
Scope of Work : Running, Breakdown maintenance & overhauling of pumps, compressor, fan, valve, deaerator, Pre heater, piping etc. of TG & Auxiliaries
Location : Jharli, Haryana

LANCO Power Company Ltd.

Capacity of Plant : 120MW Gas Based Combined Cycle Power Plant
Scope of Work : Electrical, Instrumentation and Mechanical Maintenance of Combined Cycle Power Plant.
Location : Tanjore, TamilNadu.

KSK Mahanadi Power Company Limited

Capacity of Plant : 6 X 600 MW Thermal Power Plant
Scope of Work : Operation And Maintenance of Electrical and C&I Works at 6 x 600 MW Thermal Power Plant
Location : Akaltara, Chhattisgarh.

KONKAN LNG LIMITED

Capacity of Plant : 5 MMTPA of LNG processing unit
Scope of Work : Annual maintenance contract (AMC) for Mechanical department
Location : Ratnagiri, Maharashtra

O & M Experience - Ongoing Jobs

Nuclear Power Plant

NPCIL – KUDANKULAM NUCLEAR POWER PLANT, KUDANKULAM, TAMILNADU

Capacity of Plant : 2 x 1000 MW Nuclear Power, 230/400 KV Substation

Scope of Work :

1. Operation & Maintenance of 230KV & 400KV GIS
2. Assistance for Maintenance of Main Plant Process I&C
3. Assistance maintenance of ESFAS System I&C
4. Operation and maintenance support for UGV, UGW, Infra Structure STP, OHT and Ventilation systems
5. Operation and maintenance of the Electrical installation of infrastructure at KKNPP Anuvijay Township
6. Maintenance of Electrical Part of Process Systems in Main Plant Area Inside Operating Island at KKNPP-1&2
7. Maintenance of Battery Banks at KKNPP - 1&2
8. Operation and Monitoring of various systems and equipment data's of KKNPP Unit-1
9. Operation and Monitoring of various systems and updating of Operating Systems & Equipment data's of KKNPP Unit- II
10. Hot Oil Circulation in power transformers shunt reactors at KKNPP 1 and 2.

Location : Kudankulam, Tamilnadu.

Hydro Power Plant

NHPC LTD

Capacity of Plant : 3X110 MW Hydro Power Station

Scope of Work : Round the clock Maintenance of EM plant and machinery at Power House Transformer Cavern Valve House and switchyard of 3X110 MW Kishanganga Power Station PKG300

Location : Kishanganga, Jammu & Kashmir

Process Industry

Adani Mundra Solar Energy Ltd

Capacity of Plant : 2 GW Solar PV Panel Production Facility

Scope of Work : Operations & Maintenance of Electrical Systems for 2 GW Solar PV Module Manufacturing line Facility

Location : Kutch, Gujarat

Adani Mundra Solar Pvt Ltd

Capacity of Plant : 1.2 GW Solar PV Panel Production Facility

Scope of Work : Utility - Operations & Maintenance of Electrical Systems for 1.2 GW Solar PV Cell Module Manufacturing Facility line of Mundra Solar PV Ltd

Location : Kutch, Gujarat

Bharat Aluminium Co. Ltd.

Capacity of Plant : 570 MTPA of Aluminium Processing Plant

Scope of Work : Operation Assistance services at MRSDS

Location : Korba, Chattisgarh

O & M Experience - Ongoing Jobs

Substations & Renewable Energy



Indigrd (NER II Transmission Company Limited)

- Capacity of Plant** : 400/132 KV 7X105 MVA, Substation
- Scope of Work** : Comprehensive (integrated) basis operation & maintenance of 400/132 KV 7X105 MVA, Substation
- Location** : Surajmani Nagar, Tripura
- Scope of Work** : Comprehensive (integrated) basis operation & maintenance of 400/132 KV 7X105 MVA, Substation
- Location** : PK Bari Nagar, Tripura

Sterlite Power Grid Ventures Ltd

- Capacity of Plant** : 400/220KV GIS
- Scope of Work** : Operation of 400/220Kv GIS substation of NRSS-XXIX Project(NRSS)
- Period of Business** : 01.03.2018 to 28.02.2021
- Location** : Amargarh, Jammu & Kashmir.

Sterlite Power Grid Ventures Ltd

- Capacity of Plant** : 400/220 KV GIS
- Scope of Work** : Comprehensive(integrated) Basis Operation & Maintenance of 400/220 KV ABB make GIS substation
- Period of Business** : 01.08.2018 to 31.07.2021
- Location** : Patran, Punjab.

Acciona Energy - Tupaddahalli Energy India Pvt. Ltd.

- Capacity of Plant** : 110/33 kV Pooling Substation of 100MW - Wind Farm
- Scope of Work** : Operation and Maintenance of 110/33 Kv Pooling Substation 110kV and 33kV Transmission Lines
- Location** : Singenahalli, Karnataka

O & M Experience - Ongoing Jobs

Substations & Renewable Energy

Power Grid Corporation Of India Limited

Capacity of Plant : 765/400 kV Bhadla-II substation 765/400 Fatehgarh-II substation 400/220kV Koteshwar substation
Scope of Work : Functional support services for operations at BHADLA-II, FATEHGARH-II & KOTESHWAR substations of NR-1 (Package B)
Location : Rajasthan and Uttarakhand

Power Grid Corporation Of India Limited

Capacity of Plant : 765/400/220KV Substation
Scope of Work : Maintenance works of 765 / 400 /230 or 220 kV Transmission lines under O&M in SRTS -II
Location : Trivandrum, Pathanamthitta, Kochi, Trissur, Kozhikode, Kerala

Power Grid Corporation Of India Limited

Capacity of Plant : 765/400/220KV Substation
Scope of Work : Maintenance works of 765 / 400 /230 or 220 kV Transmission lines under O&M in SRTS -II
Location : Dharmapuri, Salem, Udumalpet, Trichy, Madurai, Tirunelveli, Kovilpatti, Tamilnadu

Power Grid Corporation Of India Limited

Capacity of Plant : 765/400/220KV Substation
Scope of Work : Maintenance works of 765 / 400 /230 or 220 kV Transmission lines under O&M in SRTS -II
Location : North Tamil Nadu & Pondy stations- Sriperumbudur, Kalivanthapattu, Thiruvallur, Hosur, Ariyalur, Neyveli, Pudhucherry

Power Grid Corporation Of India Limited

Capacity of Plant : 765/400/220KV Substation
Scope of Work : Maintenance works of 765 / 400 /230 or 220 kV Transmission lines under O&M in SRTS -II
Location : Somanahalli, Kolar, Madhugiri (Tumkur), Hiriyur, Harihara (Newhub), Yelahanka, Pavagada), Karnataka

Sasan (Reliance) Power Limited

Capacity of Plant : 765KV, 400KV & 132KV Substations of 6x660 MW Power Plant
Scope of Work : AMC For Switchyards (765KV, 400KV & 132KV) including HT (33KV) and LT Switchgears
Location : Singrauli, Madhya Pradesh.

O & M Experience - Ongoing Jobs

Substations & Renewable Energy

Clean Wind Power (RATLAM) Pvt. Ltd (Hero Future Energies Pvt. Ltd.)

Capacity of Plant : 220 /33 KV Pooling Substation at 100 MW
Scope of Work : Operation and Maintenance of 220 /33 KV Pooling substation at 100 MW , Badnawar, Ratlam Project
Location : Ratlam, Madhya Pradesh.

Hero Wind Energy Private Limited (Hero Future Energies Pvt. Ltd.)

Capacity of Plant : 220 KV / 33 KV Pooling Substation - 120MW
Scope of Work : Operation and Maintenance Services for 220 KV / 33 KV Substation
Location : Gurvepalli, Andhra Pradesh.

Hero Solar Energy Private Limited (Hero Future Energies Pvt. Ltd.)

Capacity of Plant : 33 MW Solar Park
Scope of Work : Operation & Maintenance of 33 MW Solar Power Plant
Location : PD Kote, Karnataka.

Hero Solar Energy Private Limited (Hero Future Energies Pvt. Ltd.)

Capacity of Plant : 22 MW Solar Park
Scope of Work : Operation & Maintenance of 22 MW Solar Power Plant
Location : Kollegal, Karnataka.

South Budh - Hero Future Energies Pvt. Ltd, Inox Wind & Orange Power

Capacity of Plant : 220/33 KV Pooling Substation of 120 MW Wind Farm
Scope of Work : Operation and Maintenance Services for 220/33 KV Substation
Location : Khanapur, Maharashtra.

Amplus KN Solar Pvt. Ltd

Capacity of Plant : 220/33KV Pooling Substation of 175MWp Solar Farm
Scope of Work : O&M service of 220/33kV Pooling Substation with 2nos. 80/100MVA Power Transformer for 170MW PV Solar Power Plant & 220kV line (7km)
Location : Gadag, Karnataka.

O & M Experience - Ongoing Jobs

Substations & Renewable Energy

Amplus Green Power Pvt. Ltd

- Capacity of Plant** : 133/33KV Pooling Substation - 70MW of Solar Park
Scope of Work : Operation and Maintenance for 132/33KV Plant Sub Station
Location : Mirzapur, Uttarpradesh

Amplus Sun Solutions Pvt. Ltd

- Capacity of Plant** : 132/33KV Pooling Substation - 50MW of Solar Park
Scope of Work : Operation and Maintenance for 132/33KV Plant Sub Station and associated equipments
Location : Khanak, Haryana



O & M Experience - Ongoing Jobs

Renewable Energy



Hero Wind Energy Pvt Ltd

- Capacity of Plant** : 132/33 KV Pooling substation for 31.5 MW Wind Project
Scope of Work : Operation and Maintenance of 132/33KV Pooling Substation for FY 21-22 for our 31.5MW
Location : Zaheerabad, Telangana

Green Infra Solar Farms Limited

- Capacity of Plant** : 20 MW Solar Park
Scope of Work : Operation and maintenance at 20 MW Solar Power Plant
Capacity of Plant : 5 MW Wind turbine Generator
Scope of Work : Operation and maintenance at 5 MW Solar Park
Location : Jodhpur, Rajasthan

KEC International Limited

- Capacity of Plant** : 11.54MWP / 10MW AC SPV power plant
Scope of Work : Operation and Maintenance for 11.54MWP / 10MW AC SPV power plant
Location : Parigi, Telangana

KEC International Limited

- Capacity of Plant** : 10.5 MWP / 10MW AC SPV power plant
Scope of Work : Operation and Maintenance for 10.5 MWP / 10MW AC SPV power plant
Location : Kothagadi, Telangana

KEC International Limited

- Capacity of Plant** : 11.69MWP / 10MW AC SPV power plant
Scope of Work : Operation and Maintenance for 11.69MWP / 10MW AC SPV Power Plant
Location : Peerampally, Telangana

O & M Experience - Ongoing Jobs

Airport

Airport Authority Of India

- Scope of Work** : Modernization of Chennai Airport (Ph-II), Chennai. SH: Providing technical, clerical staff and office attendants for Project Office
- Location** : Chennai, Tamilnadu

Railways

Chennai Metro Rail Limited

- Scope of Work** : Providing Electrical Maintenance Services for Traction Over Head Equipment and Power Supply Installations at 32 Metro Stations under Ground, Elevated & Depot Sections for Corridor-1 & Corridor-2
- Location** : Chennai, Tamilnadu

Bangalore Metro Rail Limited

- Scope of Work** : Comprehensive Annual Maintenance Contract (CAMC) of 33KV Switchgear Including Traction Transformers & Auxiliary Transformers, Battery Bank, ACDB, DCDB Etc for Phase-1 and Extension Station
- Location** : Bangalore, Karnataka



O & M Experience - Remarkable Executions / Completed Power Plant

NTPC LIMITED - Kahalgaon Super Thermal Power Project

- Capacity of Plant** : 2340 MW Thermal Power Plant
Scope of Work : ARC and Overhauling of Boiler & SWAS, TG & Auxiliaries, CCTV, LAB of stage-1 units and Station Fire Fighting System
Location : Kahalgaon, Bihar

NTPC LIMITED - Lara Super Thermal Power Station

- Capacity of Plant** : 2X800 MW Thermal Power Plant
Scope of Work : AMC of Construction Power for NTPC, Lara
Location : Raigarh, Chattishgarh

NTPC LIMITED - Sipat Super Thermal Power Station

- Capacity of Plant** : 2980 MW Thermal Power Plant
Scope of Work : Complete C&I System of whole plant and overhauling job contract
Location : Bilaspur, Chattisgarh

NTPC LIMITED - Singrauli Super Thermal Power Station

- Capacity of Plant** : Stage-I: 5x200 MW, Stage-II: 2x500 MW Thermal Power Plant
Scope of Work : Battery Maintenance of ST 11 and 2, HT/LT Switchgear Maint of ST1, Housekeeping in EMD ST 2 and other Electrical Works in EMD During UNIT O/H
Location : Singrauli, Madhya Pradesh

Utility Powertech Limited - NTECL (A Joint venture of Reliance Infrastructure Ltd. & NTPC Ltd.)

- Capacity of Plant** : 3X500 MW Thermal Power Plant
Scope of Work : Providing Operation Assistance works of CHP PART - A
Location : Vallur, Chennai, TamilNadu

Utility Powertech Limited (A Joint venture of Reliance Infrastructure Ltd. & NTPC Ltd.)

- Capacity of Plant** : 2X 320 MW Combined Cycle Power plant (Unit -1)
Scope of Work : Operation Services at RGPPL
Location : Ratnagiri, Maharashtra.

O & M Experience - Remarkable Executions / Completed Power Plant

Utility Powertech Limited (A Joint venture of Reliance Infrastructure Ltd. & NTPC Ltd.)

Capacity of Plant : 2X 320 MW Combined Cycle Power plant
Scope of Work : Local Area Operation Works in Power Block
Location : Ratnagiri, Maharashtra

Utility Powertech Limited (A Joint venture of Reliance Infrastructure Ltd. & NTPC Ltd.)

Capacity of Plant : 2X 320 MW Combined Cycle Power plant
Scope of Work : Carrying out Operation Service activities
Location : Ratnagiri, Maharashtra

Karnataka Power Corporation Ltd - Bellary Thermal Power Station

Capacity of Plant : 2X500 MW Coal-fired Units
Scope of Work : BTPS Unit-2 CHP Routine, Breakdown and Overhauling works of Electrical Equipments
Location : Bellary, Karnataka

Karnataka Power Corporation Ltd - Bellary Thermal Power Station

Capacity of Plant : 2X500 MW Coal-fired Units
Scope of Work : BTPS Routine, breakdown and annual overhauling works of I&C system of CHP-1&2
Location : Bellary, Karnataka

Bharat Aluminium Company Limited

Capacity of Plant : 4X 300 MW & 4X 135 MW Combined Cycle Power Plant
Scope of Work : ECI Maintenance Contract for CPP 1200 MW & CPP 540 MW
Location : Korba, Chhattisgarh.

Ideal Energy Projects Ltd

Capacity of Plant : 1X270MW Thermal Power Plant
Scope of Work : Electrical Maintenance and Electrical Testing work of main plant
Location : Bela, Maharashtra.

O & M Experience - Remarkable Executions / Completed Power Plant

TAQA Neyveli Power Company Pvt. Ltd

- Capacity of Plant** : 250 MW Lignite Fired Power Plant
- Scope of Work** : Maintenance of 250 MW (Turbine DKY2-IN41B & Generator 294.12 MVA), 220 KV SS Thermal Power Plant), Repair / service of Mechanical Rotating Equipment Electrical/ Generators, motors, HVAC & Lightning.
- Location** : Virudhachalam, TamilNadu.

Neyveli Lignite Corporation Limited

- Capacity of Plant** : 2X210 MW Thermal Power plant
- Scope of Work** : Biennial Contract for Regular and Running Maintenance of Electrical Equipments.
- Location** : Neyveli, TamilNadu.

JSW Energy Limited - SBU-1

- Scope of Work** : C & I Works for SBU1, CPP1, CPP4 & SBU2
- Location** : Bellary, Karnataka.

NLC Tamilnadu Power Limited (NTPL)

- Capacity of Plant** : 2X500 MW Thermal Power plant
- Scope of Work** : Outsourced Annual Maintenance Contract For Regular Maintenance (Preventive Maintenance And Breakdown Maintenance Work) and Running Maintenance Of Electrical System at NTPL
- Location** : Tuticorin, Tamil Nadu.

STEAG Energy Services (India) Pvt.ltd

- Capacity of Plant** : 4X600MW Thermal Power Plant (IPP) & 400KV Substation
- Scope of Work** : Operation And Maintenance of 4 X 600 MW IPP, Units – I & II switchyard & New 400 KV Switchyard
- Location** : Jharsuguda, Odisha.

Talwandi Sabo Power Limited

- Capacity of Plant** : 3 X 660 MW Thermal Power plant
- Scope of Work** : Operation And Maintenance of Electrical and C&I Works at 3 x 600 MW Thermal Power Plant
- Location** : Mansa, Punjab.



O & M Experience - Remarkable Executions / Completed Power Plant

Hindustan Zinc Limited

Capacity of Plant : 1X80 MW Captive Power Plant
Scope of Work : Erection & Commissioning Services
Location : Zawar, Rajasthan | Chanderia, Rajasthan

Hindustan Zinc Limited

Capacity of Plant : 1X80 MW Captive Power Plant
Scope of Work : Electrical Testing & Commissioning Services for Debari 210 K Project & Providing supervisory services for O&M, testing, E&C of Electrical equipment
Location : Debari, Rajasthan & Dariba, Rajasthan.

Nuclear Energy

NPCIL – Kudankulam, Nuclear Power Plant, TamilNadu.

Capacity of Plant : 2X1000 MW Nuclear Power Plant
Scope of Work : Maintenance of 6KV Switchgears at KKNPP 1&2

Capacity of Plant : 2X1000 MW Nuclear Power Plant
Scope of Work : Maintenance of electrical part of process systems in auxiliary plants outside of operating island at KKNPP

Capacity of Plant : 2X1000 MW Nuclear Power Plant
Scope of Work : Maintenance of Electrical Part of Process Systems in Main Plant Area inside Operating Island at KKNPP-1&2

Capacity of Plant : 2 × 1000 MW Nuclear Power plant
Scope of Work : Providing the Office and Supervisory Services for CSR and Civil Works

O & M Experience - Remarkable Executions / Completed Nuclear Energy

NPCIL – Kudankulam, Nuclear Power Plant, TamilNadu.

Capacity of Plant : 2 × 1000 MW Nuclear Power plant

Scope of Work : Routine Operation and Monitoring of various systems & Equipments of KKNPP Unit- 1

Capacity of Plant : 2 × 1000 MW Nuclear Power plant

Scope of Work : Contract for electrical maintenance of process systems such as LT pump motors, LT ventilation motors, valves, ventilation dampers, local control panels (LCPs), motor operated doors, electrical heater assemblies etc. within operating island boundary

Capacity of Plant : 2 × 1000 MW Nuclear Power plant

Scope of Work : Contract for Maintenance of 380V MCCs and ACDBs

Capacity of Plant : 2 × 1000 MW Nuclear Power plant

Scope of Work : Operation and maintenance of commissioned and charged Electrical Equipment in KKNPP Unit - 2

Capacity of Plant : 2 × 1000 MW Nuclear Power plant

Scope of Work : Commissioning of Electrical systems with supply of Man power and Testing Instruments

NPCIL – Tarapur Atomic Power Station, Maharashtra

Capacity of Plant : 2X 160 MW Nuclear Power plant

Scope of Work : Providing Manpower services for routine Maintenance activities in 220 KV/33KV TAPS 1 & 2 Switchyard

Capacity of Plant : 2X 540 MW Nuclear Power plant

Scope of Work : Operation and Maintenance of 220KV & 400KV Switchyard, 33KV /6.6KV outdoor Switchyard along with its associated switchgears and Assistance in round the clock shift of main plant electrical systems

O & M Experience - Remarkable Executions / Completed

Steel Industry

Tata Steel Limited

Capacity of Plant : 5 Million of Production Plant Tonnes Per Annum
Scope of Work : Maintenance of Electrical Equipments
Location : Kalinganagar, Odisha.

Maan Steel and Power Limited

Capacity of Plant : 1x12mw CPP
Scope of Work : Supervision of electrical commissioning and checking of relay setting
Location : West Bengal

Substations & Renewable Energy

South East U.P. Power Transmission Company Limited

Capacity of Plant : 400 KV / 220 KV GIS
Scope of Work : Operation and Maintenance Contract for 400 KV / 220 KV Rewa Road GIS Substation including Testing Works
Location : Allahabad, Uttar Pradesh.

Saurya Urja Company of Rajasthan Limited (SURA)

Capacity of Plant : 220 KV Pooling SS 1000 MW Solar Power Park
Scope of Work : Annual Operation and Maintenance of 220 KV Pooling Substation #1- LHS at 1000 MW Solar Power Park, Bhadla III
Location : Jodhpur, Rajasthan

South East U.P. Power Transmission Company Limited

Capacity of Plant : 765/400 KV AIS Substation
Scope of Work : Operation & Maintenance Contract for 765/400 KV Mainpuri AIS Substation
Location : Mainpuri, Uttar Pradesh.

O & M Experience - Remarkable Executions / Completed Substations & Renewable Energy

Bharat Heavy Electricals Limited

Capacity of Plant : 110/11 KV Substation
Scope of Work : Operation and Maintenance of 110KV /11 KV Substation
Location : Thiruchirapalli, TamilNadu.

National Institute of Ocean Technology

Capacity of Plant : Utility Substation
Scope of Work : Providing non comprehensive Electrical maintenance
Location : Pallikaranai, Chennai, TamilNadu.

Gujarat Energy Transmission Corporation Limited

Capacity of Plant : 66 KV Substations
Scope of Work : Operation and Maintenance contract for 66 KV Substations(7 Substations)
Location : Vadodara, Gujarat.

Siemens Gamesa Renewable Power Pvt Ltd

Capacity of Plant : 110/33 KV Substation
Scope of Work : Operation and Maintenance of 110/33 kV Substation
Location : Lingasugur, Karnataka.

Siemens Gamesa Renewable Power Pvt Ltd

Capacity of Plant : 132/33KV Substation
Scope of Work : Operation and Maintenance of 132/33KV SS at Sun Edison
Location : Yettakal, Andhra Pradesh

Siemens Gamesa Renewable Power Pvt Ltd

Capacity of Plant : 132/33KV Substation
Scope of Work : Operation and Maintenance for 132/33KV Substation capacity (2X50MVA transformer) - Phase I & II
Location : Taggupati, Andhra Pradesh.

O & M Experience - Remarkable Executions / Completed Substations & Renewable Energy

Suzlon Infrastructure Limited

Capacity of Plant : 220/33 KV Substation
Scope of Work : Operation and Maintenance contract for 220/33 KV Substation and its ring main units
Location : Coimbatore, TamilNadu.

Vestas Wind Technology India Pvt.ltd

Capacity of Plant : 66KV Substations
Scope of Work : Operation and Maintenance of 66KV Sub-stations and Lines
Location : Hiranaholli, Karnataka.

Sembcorp Green Infra Limited

Capacity of Plant : 66/33KV Substation
Scope of Work : Operation and Maintenance of 66/33KV Sub-station with line
Location : Bharmasagar, Karnataka & Teligi, Karnataka.

Process Industry

Vedanta Limited

Capacity of Plant : 1215 MW Captive Power Plant
Scope of Work : AMC Electrical of Switchyard and Rectifier
Location : Jharsuguda, Odisha.

Vedanta Limited

Capacity of Plant : 1215 MW Captive Power Plant
Scope of Work : AMC Electrical of Switchyard and Rectifier
Location : Jharsuguda, Odisha.

O & M Experience - Remarkable Executions / Completed Airport

Airport Authority Of India

Scope of Work : ARMO of E&M Installations at Tuticorin Airport; dg: 2020-21 SH : Annual Operation and Maintenance of E&M Installations

Location : Tuticorin, Tamilnadu



O & M Experience - Remarkable Executions / Completed Oil and Gas

Vedanta Cairn India Limited – Cairn Oil & Gas Division

Scope of Work : 1. Mechanical and Production Manpower
2. Provision for Instrument Maintenance Manpower

Vedanta Cairn India Limited – Cairn Oil & Gas Division

Scope of Work : Provision of LV & HV Switch Board Maintenance Services at MBA Fields
Location : Mangala, Bhagyam, Aishwarya, Barmar, Rajasthan

Vedanta Cairn India Limited

Scope of Work : Provision of Electrical maintenance Manpower
Location : Barmer, Rajasthan

Vedanta Cairn India Limited

Scope of Work : LV & HV Switch Board Maintenance services
Location : Barmer, Rajasthan

Larsen & Toubro Ltd. (BPCL)

Capacity of Plant : 33/6.6KV Substation
Scope of Work : O & M Package for LT & HT Substations
Location : Cochin, Kerala.

Cairn India Limited

Capacity of Plant : 33 kV Substations
Scope of Work : Operation And Maintenance Of Onshore Wellpads Electrical Package Substations – Ehouses On Manpower Basis Terminal
Location : Barmer, Rajasthan

Credentials

Kolkata LNG Limited
 (An OMR of GAIL India Limited)
 (Subsidiary of GAIL India Limited)

2016-17-18, 19-20, 21-22, 23-24, 25-26, 27-28, 29-30, 31-32, 33-34, 35-36, 37-38, 39-40, 41-42, 43-44, 45-46, 47-48, 49-50, 51-52, 53-54, 55-56, 57-58, 59-60, 61-62, 63-64, 65-66, 67-68, 69-70, 71-72, 73-74, 75-76, 77-78, 79-80, 81-82, 83-84, 85-86, 87-88, 89-90, 91-92, 93-94, 95-96, 97-98, 99-100, 101-102, 103-104, 105-106, 107-108, 109-110, 111-112, 113-114, 115-116, 117-118, 119-120, 121-122, 123-124, 125-126, 127-128, 129-130, 131-132, 133-134, 135-136, 137-138, 139-140, 141-142, 143-144, 145-146, 147-148, 149-150, 151-152, 153-154, 155-156, 157-158, 159-160, 161-162, 163-164, 165-166, 167-168, 169-170, 171-172, 173-174, 175-176, 177-178, 179-180, 181-182, 183-184, 185-186, 187-188, 189-190, 191-192, 193-194, 195-196, 197-198, 199-200, 201-202, 203-204, 205-206, 207-208, 209-210, 211-212, 213-214, 215-216, 217-218, 219-220, 221-222, 223-224, 225-226, 227-228, 229-230, 231-232, 233-234, 235-236, 237-238, 239-240, 241-242, 243-244, 245-246, 247-248, 249-250, 251-252, 253-254, 255-256, 257-258, 259-260, 261-262, 263-264, 265-266, 267-268, 269-270, 271-272, 273-274, 275-276, 277-278, 279-280, 281-282, 283-284, 285-286, 287-288, 289-290, 291-292, 293-294, 295-296, 297-298, 299-300, 301-302, 303-304, 305-306, 307-308, 309-310, 311-312, 313-314, 315-316, 317-318, 319-320, 321-322, 323-324, 325-326, 327-328, 329-330, 331-332, 333-334, 335-336, 337-338, 339-340, 341-342, 343-344, 345-346, 347-348, 349-350, 351-352, 353-354, 355-356, 357-358, 359-360, 361-362, 363-364, 365-366, 367-368, 369-370, 371-372, 373-374, 375-376, 377-378, 379-380, 381-382, 383-384, 385-386, 387-388, 389-390, 391-392, 393-394, 395-396, 397-398, 399-400, 401-402, 403-404, 405-406, 407-408, 409-410, 411-412, 413-414, 415-416, 417-418, 419-420, 421-422, 423-424, 425-426, 427-428, 429-430, 431-432, 433-434, 435-436, 437-438, 439-440, 441-442, 443-444, 445-446, 447-448, 449-450, 451-452, 453-454, 455-456, 457-458, 459-460, 461-462, 463-464, 465-466, 467-468, 469-470, 471-472, 473-474, 475-476, 477-478, 479-480, 481-482, 483-484, 485-486, 487-488, 489-490, 491-492, 493-494, 495-496, 497-498, 499-500, 501-502, 503-504, 505-506, 507-508, 509-510, 511-512, 513-514, 515-516, 517-518, 519-520, 521-522, 523-524, 525-526, 527-528, 529-530, 531-532, 533-534, 535-536, 537-538, 539-540, 541-542, 543-544, 545-546, 547-548, 549-550, 551-552, 553-554, 555-556, 557-558, 559-560, 561-562, 563-564, 565-566, 567-568, 569-570, 571-572, 573-574, 575-576, 577-578, 579-580, 581-582, 583-584, 585-586, 587-588, 589-590, 591-592, 593-594, 595-596, 597-598, 599-600, 601-602, 603-604, 605-606, 607-608, 609-610, 611-612, 613-614, 615-616, 617-618, 619-620, 621-622, 623-624, 625-626, 627-628, 629-630, 631-632, 633-634, 635-636, 637-638, 639-640, 641-642, 643-644, 645-646, 647-648, 649-650, 651-652, 653-654, 655-656, 657-658, 659-660, 661-662, 663-664, 665-666, 667-668, 669-670, 671-672, 673-674, 675-676, 677-678, 679-680, 681-682, 683-684, 685-686, 687-688, 689-690, 691-692, 693-694, 695-696, 697-698, 699-700, 701-702, 703-704, 705-706, 707-708, 709-710, 711-712, 713-714, 715-716, 717-718, 719-720, 721-722, 723-724, 725-726, 727-728, 729-730, 731-732, 733-734, 735-736, 737-738, 739-740, 741-742, 743-744, 745-746, 747-748, 749-750, 751-752, 753-754, 755-756, 757-758, 759-760, 761-762, 763-764, 765-766, 767-768, 769-770, 771-772, 773-774, 775-776, 777-778, 779-780, 781-782, 783-784, 785-786, 787-788, 789-790, 791-792, 793-794, 795-796, 797-798, 799-800, 801-802, 803-804, 805-806, 807-808, 809-810, 811-812, 813-814, 815-816, 817-818, 819-820, 821-822, 823-824, 825-826, 827-828, 829-830, 831-832, 833-834, 835-836, 837-838, 839-840, 841-842, 843-844, 845-846, 847-848, 849-850, 851-852, 853-854, 855-856, 857-858, 859-860, 861-862, 863-864, 865-866, 867-868, 869-870, 871-872, 873-874, 875-876, 877-878, 879-880, 881-882, 883-884, 885-886, 887-888, 889-890, 891-892, 893-894, 895-896, 897-898, 899-900, 901-902, 903-904, 905-906, 907-908, 909-910, 911-912, 913-914, 915-916, 917-918, 919-920, 921-922, 923-924, 925-926, 927-928, 929-930, 931-932, 933-934, 935-936, 937-938, 939-940, 941-942, 943-944, 945-946, 947-948, 949-950, 951-952, 953-954, 955-956, 957-958, 959-960, 961-962, 963-964, 965-966, 967-968, 969-970, 971-972, 973-974, 975-976, 977-978, 979-980, 981-982, 983-984, 985-986, 987-988, 989-990, 991-992, 993-994, 995-996, 997-998, 999-1000, 1001-1002, 1003-1004, 1005-1006, 1007-1008, 1009-1010, 1011-1012, 1013-1014, 1015-1016, 1017-1018, 1019-1020, 1021-1022, 1023-1024, 1025-1026, 1027-1028, 1029-1030, 1031-1032, 1033-1034, 1035-1036, 1037-1038, 1039-1040, 1041-1042, 1043-1044, 1045-1046, 1047-1048, 1049-1050, 1051-1052, 1053-1054, 1055-1056, 1057-1058, 1059-1060, 1061-1062, 1063-1064, 1065-1066, 1067-1068, 1069-1070, 1071-1072, 1073-1074, 1075-1076, 1077-1078, 1079-1080, 1081-1082, 1083-1084, 1085-1086, 1087-1088, 1089-1090, 1091-1092, 1093-1094, 1095-1096, 1097-1098, 1099-1100, 1101-1102, 1103-1104, 1105-1106, 1107-1108, 1109-1110, 1111-1112, 1113-1114, 1115-1116, 1117-1118, 1119-1120, 1121-1122, 1123-1124, 1125-1126, 1127-1128, 1129-1130, 1131-1132, 1133-1134, 1135-1136, 1137-1138, 1139-1140, 1141-1142, 1143-1144, 1145-1146, 1147-1148, 1149-1150, 1151-1152, 1153-1154, 1155-1156, 1157-1158, 1159-1160, 1161-1162, 1163-1164, 1165-1166, 1167-1168, 1169-1170, 1171-1172, 1173-1174, 1175-1176, 1177-1178, 1179-1180, 1181-1182, 1183-1184, 1185-1186, 1187-1188, 1189-1190, 1191-1192, 1193-1194, 1195-1196, 1197-1198, 1199-1200, 1201-1202, 1203-1204, 1205-1206, 1207-1208, 1209-1210, 1211-1212, 1213-1214, 1215-1216, 1217-1218, 1219-1220, 1221-1222, 1223-1224, 1225-1226, 1227-1228, 1229-1230, 1231-1232, 1233-1234, 1235-1236, 1237-1238, 1239-1240, 1241-1242, 1243-1244, 1245-1246, 1247-1248, 1249-1250, 1251-1252, 1253-1254, 1255-1256, 1257-1258, 1259-1260, 1261-1262, 1263-1264, 1265-1266, 1267-1268, 1269-1270, 1271-1272, 1273-1274, 1275-1276, 1277-1278, 1279-1280, 1281-1282, 1283-1284, 1285-1286, 1287-1288, 1289-1290, 1291-1292, 1293-1294, 1295-1296, 1297-1298, 1299-1300, 1301-1302, 1303-1304, 1305-1306, 1307-1308, 1309-1310, 1311-1312, 1313-1314, 1315-1316, 1317-1318, 1319-1320, 1321-1322, 1323-1324, 1325-1326, 1327-1328, 1329-1330, 1331-1332, 1333-1334, 1335-1336, 1337-1338, 1339-1340, 1341-1342, 1343-1344, 1345-1346, 1347-1348, 1349-1350, 1351-1352, 1353-1354, 1355-1356, 1357-1358, 1359-1360, 1361-1362, 1363-1364, 1365-1366, 1367-1368, 1369-1370, 1371-1372, 1373-1374, 1375-1376, 1377-1378, 1379-1380, 1381-1382, 1383-1384, 1385-1386, 1387-1388, 1389-1390, 1391-1392, 1393-1394, 1395-1396, 1397-1398, 1399-1400, 1401-1402, 1403-1404, 1405-1406, 1407-1408, 1409-1410, 1411-1412, 1413-1414, 1415-1416, 1417-1418, 1419-1420, 1421-1422, 1423-1424, 1425-1426, 1427-1428, 1429-1430, 1431-1432, 1433-1434, 1435-1436, 1437-1438, 1439-1440, 1441-1442, 1443-1444, 1445-1446, 1447-1448, 1449-1450, 1451-1452, 1453-1454, 1455-1456, 1457-1458, 1459-1460, 1461-1462, 1463-1464, 1465-1466, 1467-1468, 1469-1470, 1471-1472, 1473-1474, 1475-1476, 1477-1478, 1479-1480, 1481-1482, 1483-1484, 1485-1486, 1487-1488, 1489-1490, 1491-1492, 1493-1494, 1495-1496, 1497-1498, 1499-1500, 1501-1502, 1503-1504, 1505-1506, 1507-1508, 1509-1510, 1511-1512, 1513-1514, 1515-1516, 1517-1518, 1519-1520, 1521-1522, 1523-1524, 1525-1526, 1527-1528, 1529-1530, 1531-1532, 1533-1534, 1535-1536, 1537-1538, 1539-1540, 1541-1542, 1543-1544, 1545-1546, 1547-1548, 1549-1550, 1551-1552, 1553-1554, 1555-1556, 1557-1558, 1559-1560, 1561-1562, 1563-1564, 1565-1566, 1567-1568, 1569-1570, 1571-1572, 1573-1574, 1575-1576, 1577-1578, 1579-1580, 1581-1582, 1583-1584, 1585-1586, 1587-1588, 1589-1590, 1591-1592, 1593-1594, 1595-1596, 1597-1598, 1599-1600, 1601-1602, 1603-1604, 1605-1606, 1607-1608, 1609-1610, 1611-1612, 1613-1614, 1615-1616, 1617-1618, 1619-1620, 1621-1622, 1623-1624, 1625-1626, 1627-1628, 1629-1630, 1631-1632, 1633-1634, 1635-1636, 1637-1638, 1639-1640, 1641-1642, 1643-1644, 1645-1646, 1647-1648, 1649-1650, 1651-1652, 1653-1654, 1655-1656, 1657-1658, 1659-1660, 1661-1662, 1663-1664, 1665-1666, 1667-1668, 1669-1670, 1671-1672, 1673-1674, 1675-1676, 1677-1678, 1679-1680, 1681-1682, 1683-1684, 1685-1686, 1687-1688, 1689-1690, 1691-1692, 1693-1694, 1695-1696, 1697-1698, 1699-1700, 1701-1702, 1703-1704, 1705-1706, 1707-1708, 1709-1710, 1711-1712, 1713-1714, 1715-1716, 1717-1718, 1719-1720, 1721-1722, 1723-1724, 1725-1726, 1727-1728, 1729-1730, 1731-1732, 1733-1734, 1735-1736, 1737-1738, 1739-1740, 1741-1742, 1743-1744, 1745-1746, 1747-1748, 1749-1750, 1751-1752, 1753-1754, 1755-1756, 1757-1758, 1759-1760, 1761-1762, 1763-1764, 1765-1766, 1767-1768, 1769-1770, 1771-1772, 1773-1774, 1775-1776, 1777-1778, 1779-1780, 1781-1782, 1783-1784, 1785-1786, 1787-1788, 1789-1790, 1791-1792, 1793-1794, 1795-1796, 1797-1798, 1799-1800, 1801-1802, 1803-1804, 1805-1806, 1807-1808, 1809-1810, 1811-1812, 1813-1814, 1815-1816, 1817-1818, 1819-1820, 1821-1822, 1823-1824, 1825-1826, 1827-1828, 1829-1830, 1831-1832, 1833-1834, 1835-1836, 1837-1838, 1839-1840, 1841-1842, 1843-1844, 1845-1846, 1847-1848, 1849-1850, 1851-1852, 1853-1854, 1855-1856, 1857-1858, 1859-1860, 1861-1862, 1863-1864, 1865-1866, 1867-1868, 1869-1870, 1871-1872, 1873-1874, 1875-1876, 1877-1878, 1879-1880, 1881-1882, 1883-1884, 1885-1886, 1887-1888, 1889-1890, 1891-1892, 1893-1894, 1895-1896, 1897-1898, 1899-1900, 1901-1902, 1903-1904, 1905-1906, 1907-1908, 1909-1910, 1911-1912, 1913-1914, 1915-1916, 1917-1918, 1919-1920, 1921-1922, 1923-1924, 1925-1926, 1927-1928, 1929-1930, 1931-1932, 1933-1934, 1935-1936, 1937-1938, 1939-1940, 1941-1942, 1943-1944, 1945-1946, 1947-1948, 1949-1950, 1951-1952, 1953-1954, 1955-1956, 1957-1958, 1959-1960, 1961-1962, 1963-1964, 1965-1966, 1967-1968, 1969-1970, 1971-1972, 1973-1974, 1975-1976, 1977-1978, 1979-1980, 1981-1982, 1983-1984, 1985-1986, 1987-1988, 1989-1990, 1991-1992, 1993-1994, 1995-1996, 1997-1998, 1999-2000, 2001-2002, 2003-2004, 2005-2006, 2007-2008, 2009-2010, 2011-2012, 2013-2014, 2015-2016, 2017-2018, 2019-2020, 2021-2022, 2023-2024, 2025-2026, 2027-2028, 2029-2030, 2031-2032, 2033-2034, 2035-2036, 2037-2038, 2039-2040, 2041-2042, 2043-2044, 2045-2046, 2047-2048, 2049-2050, 2051-2052, 2053-2054, 2055-2056, 2057-2058, 2059-2060, 2061-2062, 2063-2064, 2065-2066, 2067-2068, 2069-2070, 2071-2072, 2073-2074, 2075-2076, 2077-2078, 2079-2080, 2081-2082, 2083-2084, 2085-2086, 2087-2088, 2089-2090, 2091-2092, 2093-2094, 2095-2096, 2097-2098, 2099-2100, 2101-2102, 2103-2104, 2105-2106, 2107-2108, 2109-2110, 2111-2112, 2113-2114, 2115-2116, 2117-2118, 2119-2120, 2121-2122, 2123-2124, 2125-2126, 2127-2128, 2129-2130, 2131-2132, 2133-2134, 2135-2136, 2137-2138, 2139-2140, 2141-2142, 2143-2144, 2145-2146, 2147-2148, 2149-2150, 2151-2152, 2153-2154, 2155-2156, 2157-2158, 2159-2160, 2161-2162, 2163-2164, 2165-2166, 2167-2168, 2169-2170, 2171-2172, 2173-2174, 2175-2176, 2177-2178, 2179-2180, 2181-2182, 2183-2184, 2185-2186, 2187-2188, 2189-2190, 2191-2192, 2193-2194, 2195-2196, 2197-2198, 2199-2200, 2201-2202, 2203-2204, 2205-2206, 2207-2208, 2209-2210, 2211-2212, 2213-2214, 2215-2216, 2217-2218, 2219-2220, 2221-2222, 2223-2224, 2225-2226, 2227-2228, 2229-2230, 2231-2232, 2233-2234, 2235-2236, 2237-2238, 2239-2240, 2241-2242, 2243-2244, 2245-2246, 2247-2248, 2249-2250, 2251-2252, 2253-2254, 2255-2256, 2257-2258, 2259-2260, 2261-2262, 2263-2264, 2265-2266, 2267-2268, 2269-2270, 2271-2272, 2273-2274, 2275-2276, 2277-2278, 2279-2280, 2281-2282, 2283-2284, 2285-2286, 2287-2288, 2289-2290, 2291-2292, 2293-2294, 2295-2296, 2297-2298, 2299-2300, 2301-2302, 2303-2304, 2305-2306, 2307-2308, 2309-2310, 2311-2312, 2313-2314, 2315-2316, 2317-2318, 2319-2320, 2321-2322, 2323-2324, 2325-2326, 2327-2328, 2329-2330, 2331-2332, 2333-2334, 2335-2336, 2337-2338, 2339-2340, 2341-2342, 2343-2344, 2345-2346, 2347-2348, 2349-2350, 2351-2352, 2353-2354, 2355-2356, 2357-2358, 2359-2360, 2361-2362, 2363-2364, 2365-2366, 2367-2368, 2369-2370, 2371-2372, 2373-2374, 2375-2376, 2377-2378, 2379-2380, 2381-2382, 2383-2384, 2385-2386, 2387-2388, 2389-2390, 2391-2392, 2393-2394, 2395-2396, 2397-2398, 2399-2400, 2401-2402, 2403-2404, 2405-2406, 2407-2408, 2409-2410, 2411-2412, 2413-2414, 2415-2416, 2417-2418, 2419-2420, 2421-2422, 2423-2424, 2425-2426, 2427-2428, 2429-2430, 2431-2432, 2433-2

ISO Certification



ISO 9001 : 2015



ISO 14001 : 2015



ISO 45001 : 2018

Our Infrastructure



Corporate Office - Voltech Eco Tower



Executive Cabin



Employees Workspace



Conference Hall



Training Room



Aadukalam (Recreation Room)



Board Room



Reception Area



Lobby



Cafeteria

Our Manufacturing Facilities



Voltech Techno Park - I
Relays, Electronics & Solar Manufacturing Facility



Voltech Techno Park - II
Flameproof, Valves & Skill Development Centre



Voltech Techno Park - IV
Control & Relay Panel Manufacturing Facility



Voltech Techno Park - III
Power & Distribution Transformers Manufacturing Facility



Voltech Techno Park - V
Switchgear Manufacturing Facility



Voltech Techno Park - V
Fabrication Plant

Clientele



Chennai Metro Rail Limited



KARNATAKA POWER CORPORATION LTD



GAIL



आवृत्त विकासावत अवृत्तवण
AIRPORT AUTHORITY OF INDIA



एन एच पी सी
NHPC



CAIRN



SOUTH EAST UP POWER TRANSMISSION CO. LTD.



BHEL



TATA STEEL



BALCO



HA



sembcorp



adani



KEC



LANCO



TAQA



SIEMENS Gamesa
RENEWABLE ENERGY



INOXWIND
Energizing INDIA



SUZLON



Vestas



steag



RELIANCE
Power



Sterlite Power



JSW



adhpL
AD HYDRO POWER LIMITED

Global Locations

ASEAN :

Cambodia | Indonesia | Laos | Myanmar
Malaysia | Singapore | Thailand | Vietnam

SAARC :

Bangladesh | Nepal | Sri Lanka

Middle East Countries :

Bahrain | Iraq | Jordan | Kuwait | Oman
Qatar | Saudi Arabia | U.A.E

Africa :

Algeria | Egypt | Ivory Coast | Kenya | Mali
Nigeria | Senegal | Tunisia | Tanzania
Uganda | Ghana

Europe:

Germany | Spain | Turkey | United Kingdom

South America: Brazil | Chile

Other Countries :

Australia | Uzbekistan | Japan
Russia | South Korea | USA

India Locations

Bangalore | Bhubaneswar | Chennai
Guwahati | Hyderabad | Kochi | Kolkata
Mumbai | New Delhi | Raipur
Vadodara | Vijayawada



and many more...



www.voltechgroup.com

Corporate Office

Voltech Eco Tower, No.2/429, Mount Poonamallee Road,
Ayyapanthangal, Chennai - 600 056
Ph : +91-44-43978000 | Fax : +91-44-42867746
Email : vomspl@voltechgroup.com

Follow us on

